

# Nadbużański Oddział Straży Granicznej

<https://nadbuzanski.strazgraniczna.pl/nos/ees/67785,Entry-Exit-System-EN.html>  
15.09.2025, 18:26

## Entry-Exit System (EN)

---

Wojciech Kopec  
15.09.2025

---

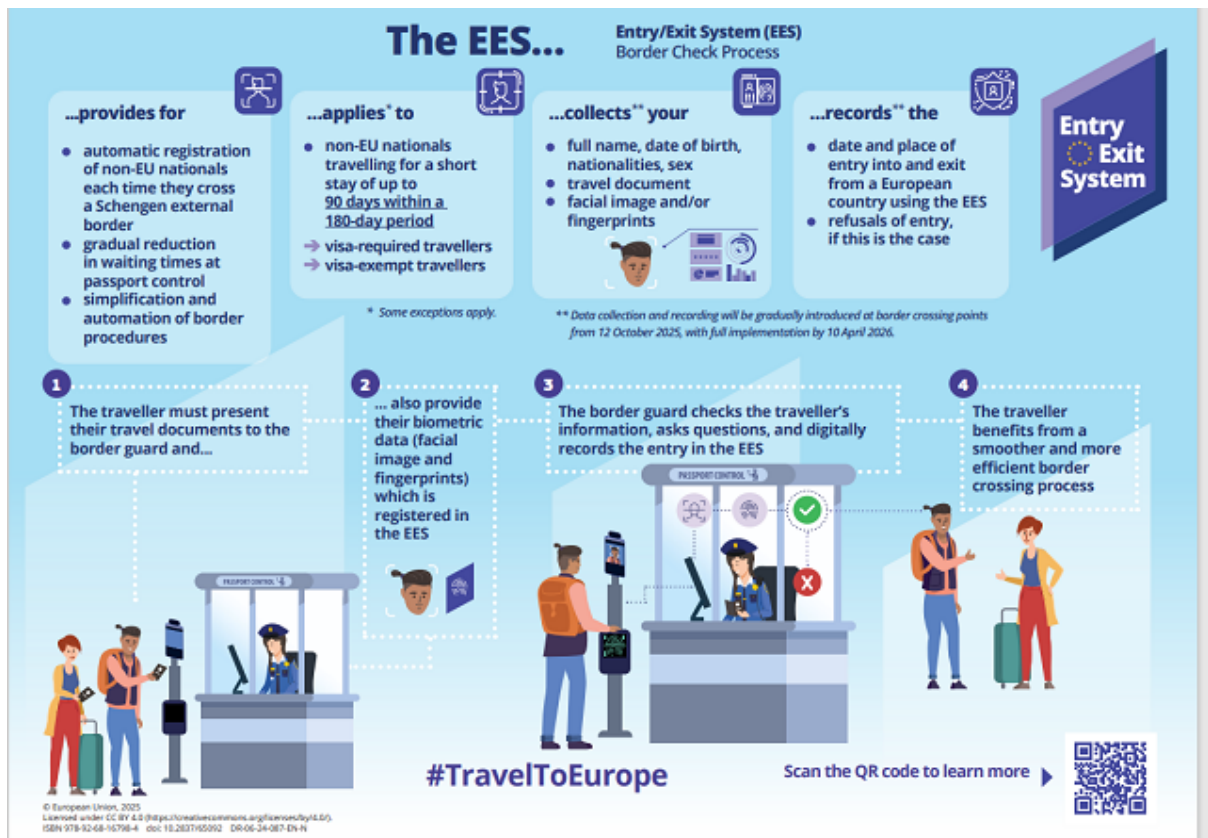
### The Entry/Exit System (EES)

## A Modern, More Efficient Border Management System for Europe

The Entry/Exit System (EES) is Europe's new border management system for registering non-EU nationals travelling for a short stay, each time they cross the external borders of 29 European countries.

Starting from 12 October 2025, the 29 European countries using the EES will progressively roll out the system at their external borders over a period of six months. During this period, travellers' data may not be collected at every border crossing point right away.

Once the progressive rollout is complete, the EES will be fully operational at all external border crossing points.



## Which European countries use the EES?

Austria, Belgium, Bulgaria, Croatia, Czechia, Denmark, Estonia, Finland, France, Germany, Greece, Hungary, Iceland, Italy, Latvia, Liechtenstein, Lithuania, Luxembourg, Malta, the Netherlands, Norway, Poland, Portugal, Romania, Slovakia, Slovenia, Spain, Sweden, and Switzerland.

## Who will be registered in the EES?

Non-EU nationals travelling to the European countries using the EES for a short stay (up to 90 days within a 180-day period), will be registered in the EES.

Travellers' data will be registered in the EES, regardless of whether they need a short-stay visa or they are visa-free travellers. Certain travellers are exempt from registration (see the section on 'Exemptions'). Refusals of entry are also recorded in the system.

The EES will not introduce any new requirements for people able to freely move throughout Europe (see 'Exemptions').

## Which data are collected by the EES?

- Personal data from the travel document, such as full name, date of birth, nationality
- Date and place of each entry to and exit from the 29 European countries using

the EES;

- Biometric data such as facial image and/or fingerprints;
- Information on refused entry, if applicable.

## Why is the EES being introduced?

The EES modernises border checks and gradually reduces waiting times at the borders.

The EES easily identifies non-EU nationals who do not fulfil the conditions of entry and stay or those who stay longer than permitted in the Schengen area.

The EES enhances the security of Europe's borders.

## Privacy

Travellers' data will be collected and stored in full compliance with EU data protection rules and rights. For more information on data protection and how you can exercise your rights in this respect, including the right to request access to or rectify data relating to you, visit <https://travel-europe.europa.eu/ees/data-held-by-ees>.

## Who can access travellers' data?

- Border, visa and immigration authorities in the European countries using the EES;
- Law enforcement authorities in the European countries using the EES and Europol;
- Under strict conditions, travellers' data may be transferred to another country inside or outside the EU or to an International Organisation;
- Transport carriers – only to verify whether short-stay visa holders have already used the number of entries authorised by their visa.

## National Facilitation Programmes

European countries using the EES may put in place National Facilitation Programmes to ease border crossings for non-EU nationals who frequently travel to Europe. These programmes may apply in one or several European countries. To find out whether you are eligible to benefit from a National Facilitation Programme, visit <https://travel-europe.europa.eu/ees>.

## Exemptions

The EES will not apply to:

- Nationals of European countries using the EES, as well as Cyprus and Ireland
- Non-EU nationals who hold a residence card and are immediately related to an EU national
- Non-EU nationals who hold a residence card or a residence permit and are immediately related to a non-EU national who can travel throughout Europe like an EU citizen
- Non-EU nationals travelling to Europe as part of an intra-corporate transfer or for the purposes of research, studies, training, voluntary service, pupil exchange schemes or educational projects and au-pairing
- Holders of residence permits and long-stay visas
- Nationals of Andorra, Monaco, San Marino, and holders of a passport issued by the Vatican City State or the Holy See
- Those exempt from border checks or who have been granted certain privileges with respect to border checks (such as heads of state, cross-border workers, etc.) • Those holding a valid local border traffic permit
- Crew members of passenger and goods trains on international connecting journeys